

The Hovingham and Scackleton Newsletter

February 2020

Welcome to the Hovingham and Scackleton Newsletter

The last three months of the year are always the bleakest. The clocks go back and the nights get darker and the days get colder with every day that passes. It always seems a long time to Christmas and to January when at last the evenings slowly start getting lighter. We can all find this time of the year depressing but the older we get the more we approach the winter with anxiety. And with good cause as we all know that at this time of the year the elderly are vulnerable. This year three of our older citizens died within a few weeks of each other. John Davies died on his birthday, 20th October. He collapsed a few days earlier whilst on the Isles of Scilly, and although he was air lifted to Truro in an effort to save his life, he never recovered. His funeral service was on 12 November at Ampleforth Abbey. Maureen Lucas had been suffering ill health for over a year and died at home, surrounded by family on 22 November. Her funeral service was held at Hovingham Church on Friday 6th December and was followed by a burial in Hovingham Cemetery. The funeral, on December 18th for Gill Richardson was in the Worsley Arms Hotel. She and her husband David had only just moved away from Hovingham to be nearer their family in Easingwold. All three long-time residents will be greatly missed.

Thankfully, whilst I write this in the last few days of January, the evenings are beginning to be lighter, a sure sign that spring and the warmer weather are just around the corner!

Eddie Lucas

Keep those stories coming to newsletter@hovingham.org.uk - Next edition copy deadline is 20th March 2020

Hovingham Surgery offering Online Consultations and Information

The On-Line Consultation Service:

The practice has introduced this service so you don't always need to go to the Practice to get medical expertise.

This process is best suited to non-emergency medical problems.

- You will be asked to **enter the reason you are requesting help** e.g. sore throat, back pain etc. and then you will be asked a series of relevant medical questions. The answers to these questions will provide information to help the GP or Practice Nurse decide what to do next in order to help you best.
- There is an option for you to choose which practitioner you would like advice from. Obviously, it is impossible to always guarantee a response from a named individual as he/she may not be available. In the event that the person who you have asked for is unable to respond then you will hear from the practice anyway. Your response from the Practice, generally by telephone, will usually be by the end of the next working day at the very latest.
- See the website for more information
<https://www.ampleforthandhovinghamsurgeries.nhs.uk/info.aspx?p=11&pr=B82609>

24/7 Online Health Information Service:

There is also online access to reliable and trustworthy self-help generic information 24 hours a day, 7 days a week that may help you to avoid an appointment altogether. <https://wsp.psf-live.co.uk/7027/#/self-help-resources>

Hovingham Surgery – Phone 01439 788215

	Reception	Medical
Monday	08:30 - 13:00	GP
Tuesday	08:30 - 13:00	ANP & HCA
Wednesday	08:30 - 13:00	GP
Thursday	08:30 - 13:00	GP & Nurse
Friday	08:30 - 13:00	GP
Weekend	Closed	

Extended Access Service

Ampleforth Surgery - appointments outside of core hours:

Tuesday up to 8pm

Selected Sunday mornings from 8-10:30am

Patients can also access appointments at:

Derwent Surgery:

Monday, Wednesday and Friday up to 8pm

Saturday mornings from 8-10:30am

Selected Sunday mornings from 8-10:30am

Medication Ordering and Collection

Dispensary telephone lines will be answered between 10 am and 5 pm. An answering machine will be available to record your details and prescription request if you ring between 9 - 10 am and 5 - 6 pm.

We ask patients to give the surgery **3 working days'** notice when ordering their repeat medications.

Contact: newsletter@hovingham.org.uk or (01653)-628364

Published © 2020 by The Hovingham & Scackleton Newsletter Group. Views are not necessarily those of the Newsletter Group or Parish Council

Helen's Hair Shave – for Cancer Research UK

In February 2020 I have decided that I am going to shave off and donate all my hair. I will be donating as much hair as possible to the Little Princess Trust, where it can be made into a wig for a child or young adult who has lost their hair due to Cancer. I will be shaving off the rest of my hair and all the money raised will be given to Cancer Research UK. Cancer is affecting 1 in 2 people, including my own relatives. I want to do my little bit to help future friends and families.

Helen Wilson



For more information and to donate to this fundraiser

<https://www.justgiving.com/fundraising/helen-wilson-haircut>

Project Purple supporting local Climate event

Ryedale Christian Council



Climate Change: Dangers, Difficulties & Solutions

One day conference

Save the date:
Saturday 25th April 2020

Lady Lumley's School, Pickering

Speakers
Workshops
Displays

Project Purple are sponsoring a bus to take residents to and from Lady Lumley School for this event organised by Ryedale Christian Council focusing on Climate Change, the dangers, difficulties and solutions.

This sponsorship is part of Purple's initiative to reduce our local Carbon Footprint.

Everyone is welcome and encouraged to attend this event

If you would like to attend and would like to use the bus please contact:

purple@hovingham.org.uk

or telephone Ann Chapman - 627171



More details in the next Newsletter



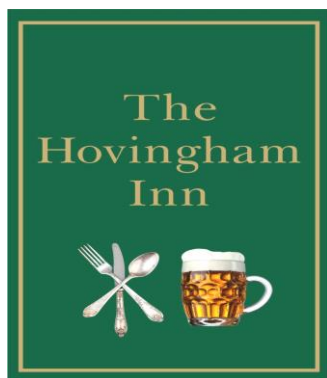
World Day of Prayer – 6th March



Members from Slingsby, Hovingham, Scackleton, Coneysthorpe and Barton le Street Churches and Chapels join together to attend the annual World Day of Prayer service (formerly known as Women's World Day of Prayer) **at the Methodist Chapel, Slingsby on Friday 6th March at 2pm.**

This service, with the theme 'Rise! Take Your Mat and Walk' has been prepared by Christian Women of Zimbabwe. All Welcome. If you need transport please contact Sue Goodwill 628077.

Hovingham Inn – Locals Offer



Winter opening hours

Bar 12-2pm / 5.30-11pm Wed – Sat, Sun open all day

Food 12-2pm / 6.30-8.30pm Wed – Sat Sunday lunch 12.30-3pm

LOCALS ONLY OFFER

Please bring along this advertisement in exchange for a complimentary selected drink when eating

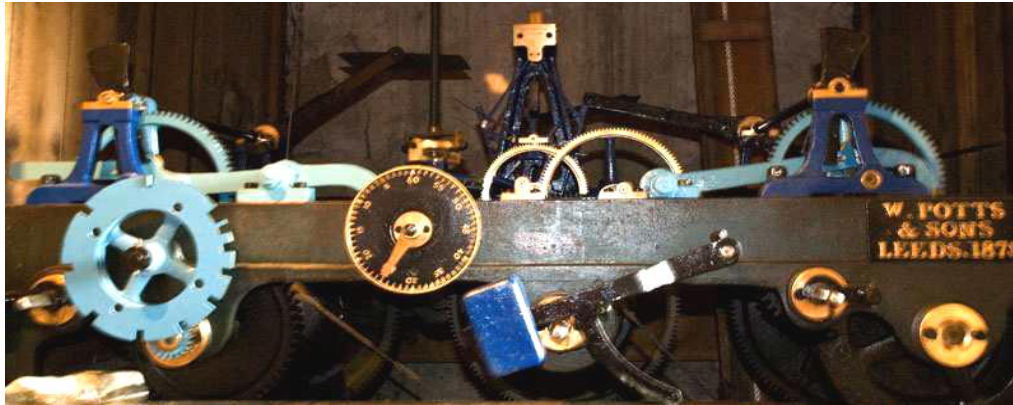
Everyone welcome and we are Dog friendly in the Bar

Richard & Lindsey look forward to welcoming you

Main Street, Hovingham YO62 4LF Telephone 01653 628428

www.hovinghaminn.co.uk eat@hovinghaminn.co.uk

Murray and I have been applying for grants to help us reach our target of over £8000 to electrify the winding mechanism. If we are able to secure these grants together with funds already raised, and with a market café and a boot fair to come, we will be well on our way to reaching our target.



Initially the clock cost £400 in 1879 and this money was raised by public subscription by villagers for the village.

The clock face was placed on the east wall of the Church tower when the railway first came to Hovingham so that everyone would know the time and when the train was due.

According to national statistics this equates to £26,500 in today's money and at the time the £400 would also equate to 1212 days wages of a skilled tradesman, the cost of 14 horses or 41 cows or 312 quarters of wheat.

Graham Mason

Noise from Quarry Operations

Following significant feedback from Hovingham residents about Quarry noise, the Parish Council, following their meeting on 8th January 2020, have referred residents' complaints to the Environmental Health Officer at Ryedale District Council and also Hovingham Estate who own the Old Quarry

The Parish Council are awaiting replies. If anyone has experienced damage to their property, which they believe is caused by the renewed Old Quarry workings, they should contact their insurance company immediately.

Parish Clerk

Support Ryedale Community Transport

Ryedale Community Transport (RCT) is a local charity which provides vital transport links to residents. Can you help with fundraising for them via your online shopping?

RCT have registered with 'easy fundraising', a web site which gives RCT a donation from on line shops such as Amazon, Next etc.

All you have to do is register with Easy Fundraising via the link below and when you want browse any of the 4000 or so online shops linked to them you log in to Easy Fundraising and browse the shop via this site. RCT then earn commission on any purchases made so you donate to us as you shop! <https://www.easyfundraising.org.uk/causes/ryedalect/>

Anyone can donate to us so feel free to spread the word!



Ryedale
Community
Transport

Parish Council VACANCY

There is currently a vacancy for a Councillor on Hovingham with Scackleton Parish Council

If you are interested, please contact: Mrs. S. Wainwright, the Parish Clerk

parishclerk@hovingham.org.uk or Telephone (01653) - 628364

Carol Concert 7th December

A very big thank you to all those who came to the carol concert. The Church was full once again and it made a good start to the Christmas celebrations. We are very grateful to Ampleforth and Ryedale Concert Choir for coming to Hovingham once again.

A big thank you also to all the helpers who served the mulled wine and mince pies, without you it would not be possible. We would also like to thank Eddie's grandsons who helped me move the chairs from the hall to the Church on the Friday and to those who helped me take them back after the concert. After all the expenses we made over £900 and from this the Church donated £100 to Crisis at Christmas.

Graham and Jackie Mason

Chapel Christmas Service December 15th

At this beautiful Carol Service three Advent candles were lit by Carol and Alistair Battersby. Rev Brian Shackleton arranged some letters, possibly written by Elizabeth (mother of John), Mary, The Innkeeper (where Jesus was born), a Shepherd (who saw a shining star) and Joseph to coincide with readings from the bible. Many hymns were sung to the music from the organ so kindly played by Rob Sanderson.

We all enjoyed the home-made mince pies, scones and tarts after the close of the service.

Community Carol Singing 22nd December

The Worsley Arms again hosted the Community Concert, with the 80 or so attendees singing favourite and festive songs. A big thankyou to Tony and Sally Finn for hosting this popular event.

Christmas Services on 24th December

Christingle (at 4^{pm}) and Christmas Eve (10^{pm}) services were also extremely well attended. The Christingle collection is given each year to the Children's Society, a considerable amount of which is collected during the year in Christingle Money boxes by the school children themselves.



Hovingham Christmas Trees - recycled into mulch

'Thank you' to all those households that brought their Christmas Trees to the Village Hall car park this year. There were some 60 trees this year (slightly up on last year).

There was nearly a rethink when the team arrived, they found the carpark jammed packed with cars thought to be from a walking group. After some scratching of heads, the team decided with a bit of skilful driving here and a precision parking of the tractor there, we could do it.

Out came the gloves, chainsaw, and shredder and working methodically through the heap, despite the chill the sun was shining and the work went very well, helped by the experience gained from last year. Conifers are more difficult to shred than other trees so extra care was taken with trimming trees to fit the hopper better and then feeding them in more slowly. To finish, out came the broom and the leaf blower to gather the last fronds.



From this



Nearly done ...

Hovingham Village Market and Hovingham Project Purple who sponsored this project, are again delighted with the number of trees processed and very grateful to stalwarts Mark Wilson and James Gordon-Finlayson (of Circle Garden Services) who wielded chainsaw, mulcher and brooms.

If you would like mulch for your garden then call Mark Wilson - 628235

Our Christmas markets caught the ears of BBC Radio York who chose the market as a clue stop for the popular, Finders Keepers programme. Local residents Mary and Joyce were interviewed as was Tony who was managing the market – all of the interviews were broadcast live.

Ella, the donkey sold mistletoe in aid of Parkinson's UK. Approaching the market, the Christmas carols from the Swinton & District Excelsior Brass Band could be heard adding to the atmosphere. The Hovingham Action Group (Project Purple - Hovingham's climate and environment group) and the Hovingham Clock Winder appeal ran the December cafés. Project Purple's information stand attracted positive interest from both residents and visitors.

We attracted eleven guest stalls in December including food hampers, cheese, wreaths and hand-made eco printed textiles, silk and wool scarves, journals, naturally dyed ribbon and cards all made in Cawton.



Father Christmas dropped by with sweets for visitors of all ages – 'tis the season of generosity. Ryedale Dog Rescue spun their tombola to raise much needed funds for the dogs they rescue in this area. Stallholder Jayne Harrow of Simply Sweet created a special chocolate Christmas Celebration cake much enjoyed by all. Artist and poet Patrick Smith treated visitors to a live performance of Ode to Hovingham Market: a light hearted and humorous poem written to commemorate the market's 10th anniversary year. If you'd like a copy, contact themarket@hovingham.org.uk

We start 2020 with our first market on Saturday 1st February.

With Valentine's Day coming up, love is in the air, particularly love of local and the celebration of our fabulous food, art, craft and live music.

North Yorkshire Rotters and the Yorkshire Wildlife Trust will be joining us.

The Hovingham Village Hall are running the Community Café so make a date to meet up with your friends, family and neighbours and let's eat cake and bacon butties.

Here's to a Happy and Healthy New Year to all and sustainable communities.

Caroline Davis



Not much has changed since publication of the article in the December newsletter. The General Election result is known. The moratorium put in place by the Government remains in place.

The final modifications to this area's Minerals and Waste Joint Plan are yet to be published and consulted upon. The Government appointed Planning Inspector is broadly satisfied that the plan is 'sound'. Following the consultation, the Planning Inspectorate will publish their report.

Locally, Third Energy have applied to extend all of their planning applications for permission to continue using existing sites for fossil fuel extraction for 17 years. The North Yorkshire County Council Planning Officer is recommending approval.

David R Davis

Project Purple News – reducing our Carbon Footprint

Recycling News:

- **Recycling Centre:** The Hovingham Recycling centre will be refurbished this year. This plan is a joint initiative with RDC, Hovingham School and Project Purple to enhance and broaden the recycling collections. The school will provide children's artwork to decorate the recycling area, RDC will refurbish the fences etc and bins, Project Purple will coordinate and design and produce the Artwork and Signs.
- **Reuse and Upcycling:** Following the positive response to Project Purple's Market stall in December which attracted both interest and volunteers, we are delighted that both the Repair Café and Share Shed will now go ahead.
- **Repair café:** This will be run 4 times per year on the second Saturday at the end of each quarter. 14th March, 13th June, 12th September, 12th December.
10 Volunteer tradespeople and artisans will be available to repair electrical items, use sewing machines to repair and repurpose clothing etc.
Check the next Newsletter and Website for details of the Repair café opportunities on March 14th in the Village Hall.
- **Share Shed:** was also well supported by 7 volunteers at the Market. A list of items available and how to use the Shed will be made available as soon as possible.



Energy Efficiency News:

- **Electric Vehicle Charger:** this 2-car charger will be installed at the Village Hall on 14th February. This is available for residents and visitors.
- **Home Efficiency Guide:** A practical 'guide' for local residents is being prepared which outlines effective techniques to reduce home energy usage, get the best deal on your energy bills and how to swap to lower carbon options. This should be available In April.



Hovingham Fireplaces
Worsley Arms Business Park,
Hovingham, York, YO62 4LA
Phone: 01653 628222

Fireplaces
Multi Fuel Stoves
Marble & Granite
surrounds
Gas Fires,
Stone Fireplaces
Granite Worktops

www.hovinghamfireplaces.co.uk

THE WALL - Only 2 miles West of Hovingham

Fresh Seasonal Vegetables
Orders taken for Christmas
Fresh Turkey and Chickens

Everything we sell is
grown on our farm

THE WALL, COULTON
CORNER HOUSE FARM, COULTON,
HOVINGHAM, YORK
OPEN 24 HOURS, 7 DAYS A WEEK
PHONE: 01347 888293 www.thewall-coulton.co.uk

Carol Service in December

The December carol service in St George's Church had around 27 attendees, mainly from the village, aged 6 years old upwards. The church, twinkling with many candles & fairy lights, had been beautifully decorated and lit in Christmas colours of red & green. The Christmas Story of the Birth of Jesus was told, with readings from attendees and the hearty singing of carols. Mulled wine and mince pies after the service gave us all the opportunity to have chat. A lovely joint effort from the village to make it a special evening. An enjoyable start to the Christmas celebrations.

Nicole Robson



Volunteering – fun & games

Jim & I had previously volunteered at The Sheriff Hutton Point to Point for Yorkshire Air Ambulance in 2019 selling race cards on a beautiful, sunny, but cold day, when there was a record turnout of people due the cancellation of other local meetings.



How different this year was I hadn't realised that I could have a full workout while volunteering!

We had heavy rain overnight, and it was still raining when we turned up in the morning to work on the gates selling tickets. It wasn't long before the top of the field was churned up and turned into a quagmire, and so began my workout.

4x4s generally got through, if driven with enough speed, some sliding sideways onto a grassy section where they regained traction. However, many other cars only made it so far and got stuck in the mud, which then required several of us to push and cajole the vehicles to one side or another. Even when we gave specific directions as to how and where to drive, which worked for those that followed them, many people ignored our suggestions and got stuck in the mud! I reckon I must have spent at least half my time pushing cars around, either as they came in or as they left, so that by the time I got home mid-afternoon, mud-splattered, I was exhausted, but I did sleep well that night.

Attendance was lower than 2019, a record year, but this year they got to experience some rally driving in mud as well as the horse racing! Leaving at the end of the day was a challenge, with a tractor assisting quite a number of cars, and the field will take some time to recover. Hopefully everyone still enjoyed themselves and we raised plenty of money for Yorkshire Air Ambulance – more information in the April edition.

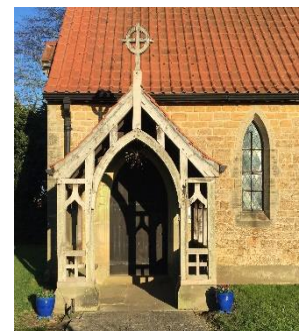
Nicole Robson

Blooming Marvellous



2 more tubs of floral delights have been placed on the grass verge next to the paving plinth for the bench (currently in storage), along with 2 blue pots outside the porch to St George's church. Thank you to: John & Lyn White for acquiring the tubs for the Scackleton Action Group & Nicole the blue pots & feet; John Ramsey who kindly moved and positioned all the items for us; Richard Wood for the planting & on-going maintenance of the containers for Spring & Summer to ensure we have all year-round colour in Scackleton.

Our 2 older tubs by the water pump and entrance sign, previously looked after by Sue John & Nicole, will be completed later this month.



Nicole Robson

Upcoming Events



**Work-Shy, local band, in
St George's Church, Scackleton**

March 2020



**VE Day 75
Ringing Out for Peace
Friday 8th May, 2020**

As I write this, the weather seems to have settled down for a while with high pressure across the country. It is great to see some blue sky and frosty mornings and the days starting to get longer. Although the shortest day was just before Christmas, it only gets lighter in the evenings at first and the mornings don't get any lighter until early January.

The last few months of 2019 were challenging, frustrating and certainly ones to forget. It is amazing to think it was only slightly wetter than 2018 (7mm), but the rain was concentrated over shorter periods. The first four months of 2018 had over twice the rain as 2019, but the last four months of 2019 had 120mm more than 2018. Crucially 243 mm fell in September and October which is the optimum sowing time for Autumn crops.

I have been fortunate to get quite a lot of my planned drilling done but this still leaves more to do in spring than I wanted. There will be pressure on availability of seed as varieties ideal for Autumn sowing can't be drilled in Spring. Along with short supply comes a hike in the price which then raises the question will it be worth sowing when the seed costs so much? Of course, this also depends on what condition the land will be like in a few months. Land that has been flooded will need time to dry out and get it back into a workable condition.

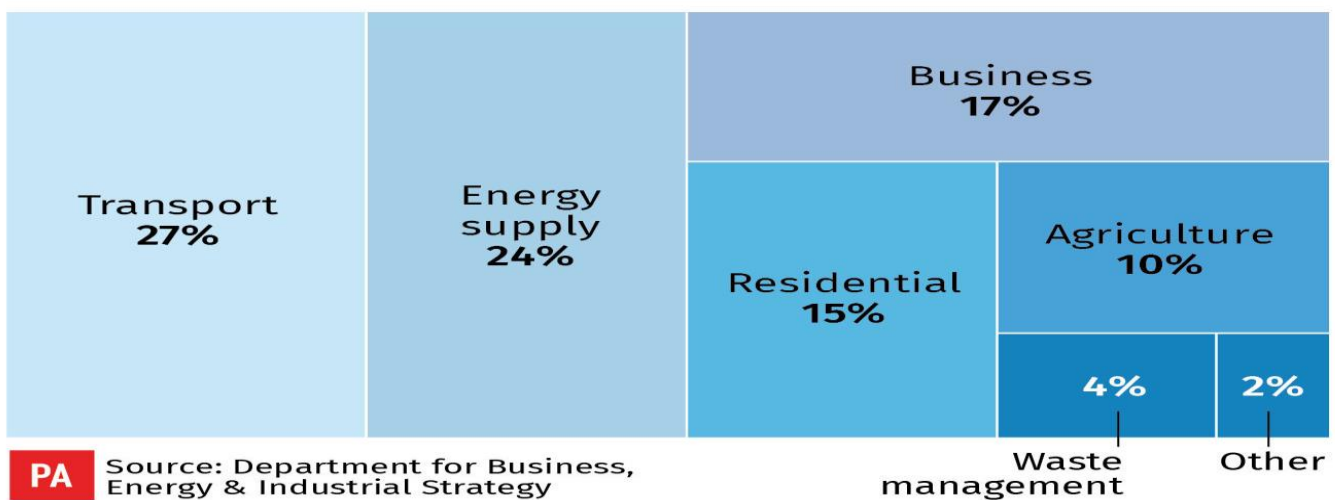
Having no livestock, the last couple of months have been fairly quiet. Most of the wheat and oats that were sold earlier in the year have now been moved out with only a couple of loads to go in the next few weeks. At least this gives some time for catching up with maintenance jobs and other bits and pieces.

Now we seem to be heading for Brexit, we will find out how the new Agriculture Bill will look and one of the early indications is that thankfully food production will be part of it. This may sound like an obvious thing to include, but over the past few years it has felt like all the focus has been on the environment and not on our home-grown food. Having been involved in countryside stewardship schemes since 2003 along with thousands of other farmers, it has been proved that food production and the enhancement of the environment can run side by side.

It is fair to say that at the moment farmers feel that the media is unfairly blaming us for climate change. Various TV programmes have said in a very sweeping way that all meat production is bad and that the only way to save the planet is to get rid of all livestock. Livestock farming varies greatly across the world but the carbon footprint of UK cattle is 2.5 times lower than the global average - a point quite often missed out. Grassland absorbs CO2 so grass fields and livestock should not be demonised as the root of the problem. We are not perfect and there are always ways to improve so I hope that moving forward we are encouraged to continue producing safe and nutritious food. After all, no country has more checking and traceability with food production than ours.

Mark Wilson

Greenhouse gas emissions in the UK 2017



With branches at Kirkbymoorside & Pickering

Dedicated small animal practice in modern purpose-built premises. Our friendly team of four vets, four fully qualified nurses and support staff are all committed to providing the best possible care for your pets. We are your pets' GP, surgeon, dentist and midwife.

www.edgemoor-vets.co.uk





John Davies

I together with Thalia, Jonathan and their families would like to thank everyone for the cards, flowers, hugs and wonderful words following the loss of our beloved husband and father John.

We were able to send a donation of £314 to the RNLI and £264 to Heart Research UK. It was overlooked to collect at the Abbey service but Tony at the Worsley Arms kindly provided a collection point.

We have had wonderful support through this truly awful time, thank you all so much.

Diana Davies



Maureen Lucas

The family would like to say thank you for all your good wishes, beautiful cards and offers of help which you have given to them.

And special thanks to, The Music Group for their singing, Sophie for the afternoon tea and for all Maureen's friends and family, from far and near, who came to celebrate her life.

The generous collection is to be directed at Children's activities (particularly music) in Hovingham, an ambition that reflects the commitments that Maureen herself clearly promoted in her lifetime.

Eddie Lucas



Gill Richardson

I would like to say heartfelt thanks to everyone who came to the service celebrating the life of Gill at the Worsley Arms Hotel on the 18th December. It was an exceptional turn out by some travelling long distances and of course all the Hovingham residents.

Gill will be greatly missed by me and my family, they say it gets easier as time goes on, I do hope so.

It was a lovely service, all Gill or I could have wished for, and a fitting way to say goodbye to a wonderful, caring and thoughtful person. Although Gill wasn't that well known in the village, lately she channelled all her energies into looking after me and her wonderful grandchildren Max and Millie. She did love living in Hovingham, where we had wonderful neighbours.

I must pay thanks to the following; firstly, to Tony and Sally at the Worsley Arms. They couldn't do enough for me at the service and made sure everything went smoothly and without any fuss. Also, thanks to Diana Mason who put me in touch with the right people to run the service, I don't think it could have been bettered. I'll forever be in her debt. Di Davies has also been a wonderful support, difficult because she recently lost her husband.

Finally, to all the lovely people of Hovingham for coming out on a cold, misty day to pay their respects to Gill. I will always treasure the time we lived in Hovingham and hope to come back on a regular basis and keep in touch with many dear friends.

Thank you, *David Richardson*



Gill with daughter Catherine

We had a nearly full Chapel on January 5th when we invited our friends from Slingsby together with the Anglicans from both villages for our important annual Covenant Service which was taken by Rev Ken Gowland at 10.30am.

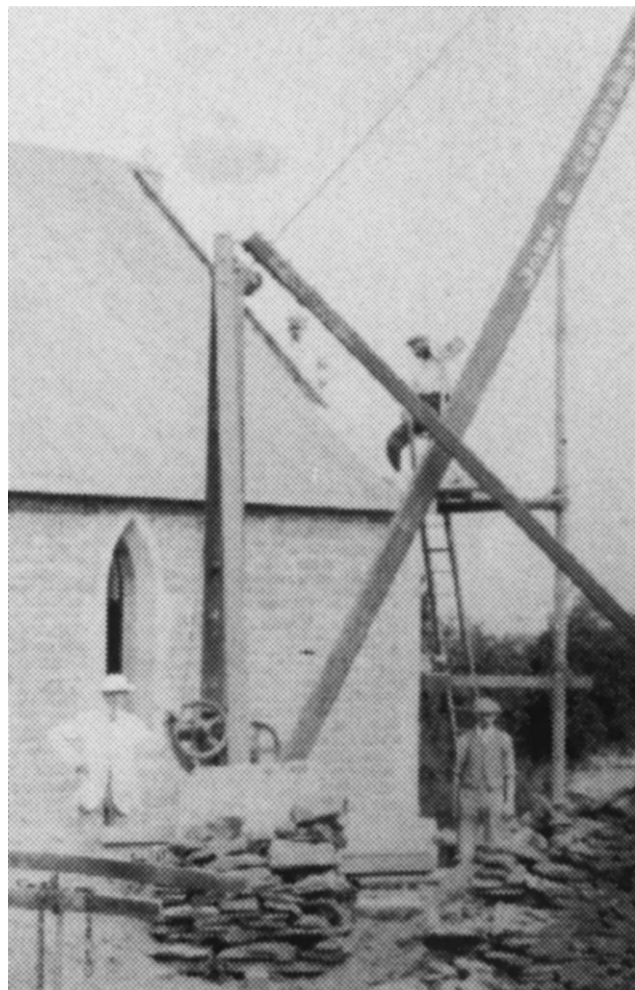
The reader was Carol Battersby and the organist Joyce Skelton. Refreshments were given at the close of the service.

The Covenant Service is often described as Methodism's liturgical gift to the ecumenical world.

Sue Goodwill



St George's Church Scackleton – a small church with big history



Built from stone quarried locally around Coxwold, Scackleton's handsome church was built by local builder John C Cornforth and consecrated by the Bishop of Beverley in May 1910.

The church is lovingly maintained today and has realised a new lease of life as the perfect venue for entertainment and bands helping to raise money for charity and community initiatives.

St George's was built with money raised from residents of Scackleton & Coulton on land donated by Lord Wentworth Fitzwilliam of Wiganthorpe. One report in the local Yorkshire Herald newspaper details a popular bazaar fundraiser at Wiganthorpe Hall with the main attraction of a crate of Delft pottery from Holland helping to raise 100 guineas towards building the church.

At the church consecration Lady Fitzwilliam is said to have made the faux-pas of wearing brown boots with her morning outfit (Edward VII had recently died) and her chauffeur was quickly despatched for appropriate change of footwear. How times have changed.

The impressive porch protecting the doorway was built by Scackleton's own stone-mason Preston Dixon who emigrated to Toronto, Canada in 1912.

Clive Birch

The Hovingham Bakery

**Simon Kelly &
Victoria Lundborg**

OPENING TIMES For Winter

Monday	...closed...
Tuesday	...closed...
Wednesday	8.30 ^{am} - 3.30 ^{pm}
Thursday	8.30 ^{am} - 3.30 ^{pm}
Friday	8.30 ^{am} - 3.30 ^{pm}
Saturday	8.30 ^{am} - 3.30 ^{pm}
Sunday	9.30 ^{am} - 3.30 ^{pm}

Telephone: **01653 628898**

Website: www.hovinghambakery.co.uk

Facebook: [/hovinghamrollingpin](https://www.facebook.com/hovinghamrollingpin)

HOVINGHAM STORES

NEWS PAPERS - WINES & SPIRITS - FRUIT & VEG - LOCAL MEATS & PRODUCE - CIGARETTES

We would like to introduce our sister business

Malton Road, Swinton, Malton

YO17 6SQ Phone: 01653694033

www.smithyarms.co.uk

*Traditional Country Pub serving
great food & drink 7 days a week*

With SKY/BT Sports and Pool Table



It is a quiet time when out walking this part of the year, but sometimes the unexpected happens. Recently on my way back from Fryton, I thought I saw two sticks in a field in the distance except when I approached them 'they' took flight. They were a pair of herons which pleased me immensely as for years I just have managed to spot a singular heron. It is great other people share my love of birds and a smoky-brown woodpecker, a wryneck, has been seen in Scackleton.

For a few weeks I have actually seen the sun rise majestically and it only takes a few minutes before the full sun emerges. If you time it right and are on the top of Terrington Bank and look west it is an opportunity to see a beautiful sunset.

Have you noticed that recently, froth or foam appears in a river stream after heavy rain? It is formed by many bubbles after leaves, twigs or other organic surfaces fall into the water and begin decaying. It is a natural phenomenon.

As Belle and I walk along listening to the song birds I notice the old empty nests high up in trees or deep in the hedges. Will they be used again this year? I also love the sound of the owls at night time.

The other day I was driving away from my house and just two fields away I saw five roe deer. Nature is very wonderful, including the emerging snowdrops and aconites. We are so lucky living in this part of Yorkshire, God's own county.

Sue Goodwill



A short walk from Terrington

For a short walk (around 2 ½ miles) with great views towards York Minster on a clear day, this walk takes in the beautiful countryside north of Terrington and the periphery of the historic Wiganthorpe Estate which was demolished in the 1950s.

- Once parked up safely in Terrington, walk along church lane and past the church heading for the track at the side of the stone house at the top of the lane.
- Continue ahead on the grass terrace ahead between the two school playing fields to a set of steps onto farmland and continue ahead to a gate.
- From the gate cross the field and join a well-defined track straight ahead (don't turn left to Cotril Farm) and follow the track which ascends away from the farm. At the brow of the hill the track ends at a hedge, go through the field gate and bear diagonally left towards the northern corner of the field.
- At the junction of two streams, cross Sawmill Beck using the hand-gate and follow the left hand-side of Wath Beck.
- As you reach a dyke and fence, cross the bridge and turn left with the dyke and fence on your left, continue uphill keeping the fence to your left. Enjoy the fabulous views as the path curves to the left and to the top of the hill with a gate straight ahead.
- Go through the gate and continue over the field keeping the fence to your left as you head towards Rose Cottage Farm.
- At the bottom of the field approach the track alongside a stone wall, turn right then immediately left and walk downhill to pass the farm with the stone wall (Wiganthorpe Park boundary) to your left.
- As you descend the hill the track becomes a minor road bringing you back into the western end of the village. Turn left onto the main street.



Clive Birch

Hovingham Estate www.hovingham.co.uk – Monday to Friday 8.30am to 4.00pm

Residential property - The Estate has residential property to rent, ranging from 2 bedrooms to 5 bedrooms, all situated within the village. **Contact:** The Estate Office on 01653 628771

Logs for sale - The Estate sell logs in varying load sizes which can be delivered within 1 mile of Hovingham Village. **Contact:** David Teasdale on 01653 628037



Please note due to harvest logs cannot be delivered during the months of August and September.

Hovingham Village Hall Management Committee held its AGM in January. Having replaced part of the roof the previous year, the most recent project has been updating the Ladies toilet. This has included plastering the ceiling, updating the disabled cubicle to meet current regulations, sensor lighting, a baby change unit, boxing in pipework and complete redecoration.

There is a constant pressure on the running costs with electric, gas, insurance and cleaning some of the highest expenses. Because of the rising costs, we have had to increase the hire charges very slightly this year after holding them the same for two years.

The village survey was looked at and generally speaking it was felt that the village hall serves its purpose pretty well. There were some comments about having more social events for villagers to attend. We are a very small committee and it takes all of our time to keep on top of the day to day running. We would very much welcome anybody to join us with ideas and the desire to look at arranging some events. Please contact us if you would like to help.

Mark Wilson

Wendy Dawson, Secretary Tel: (01653) 628296, Email: wendydawson@hovingham.org.uk

Rainfall - Hovingham (in mm)

	Jan	Feb	Mar	Apr	May	Jun	Jul	Aug	Sep	Oct	Nov	Dec	Total
2012	49	16	20	148	48	102	110	76	113	97	137	122	1038
2013	57	24	52	14	83	48	26	55	57	90	55	57	620
2014	127	58	38	23	35	54	52	94	29	72	108	48	838
2015	26	20	36	21	89	15	79	67	72	71	110	151	757
2016	87	54	93	82	24	61	41	68	31	43	82	27	693
2017	32	73	44	13	43	122	55	76	91	68	57	66	740
2018	73	34	100	90	34	27	54	52	50	55	74	99	742
2019	26	23	61	17	48	69	46	61	97	146	86	69	749
Avg	64	46	53	57	54	53	56	66	56	74	75	68	715

* Another higher than average rainfall year but better than 2012

Avg - figures calculated from 1997 to 2018

Figures reproduced with the permission of Robert Wainwright



Planning a new
indoor activity?
Our discounts
can help!

Pilot session for regular use - up to 100% off !!!
Residents or regular use - up to 25% off

Will it work? Will it be affordable? Will the first session succeed? The only way to know for sure is **to try it and see**. Your Village Hall would like to help you. Give us a call - we can offer practical advice and even advise on publicity.

Your Village Hall supports new activities

Call Janice on 01653 628952 or visit www.hovingham.org.uk



Home too small
to entertain?

There's a LOT
more space
at our place!

Hovingham Village Hall

Call Janice on 01653 628952 or visit www.hovingham.org.uk

The Autumn term at Hovingham Primary School is always a busy time, with lots of events and celebrations. In mid-November we held, our now, annual open morning inviting prospective parents the chance to visit the school during a normal working day, get a feel for what we can offer their children and ask as many questions as they like. It was a really busy morning and we were delighted to welcome so many people. Choosing the right school for your child is a huge decision and It's always a pleasure to show people around the school and demonstrate the value of our village education.

Throughout the term staff have continued to update their skills and knowledge covering areas including, Safeguarding, Teaching Phonics, Special Educational Needs, End of Key Stage Assessments and First Aid.

We have also started a Musical Theatre after school club which has proved very popular. The children threw themselves into the experience and even managed to put on a small production for parents just before Christmas.

In November we had a visit from North Yorkshire Fire & Rescue who talked to the children about how to enjoy Bonfire night safely and general fire safety in the home. The children were very impressed to see that girls can work in the fire service too!

The last two weeks of term are always jam packed with festive activities, Christmas lunch was a triumph as always thanks to our fabulous cook Miss Martin, and the Christmas Nativity concert was held in a jam packed All Saint's Church attended by friends and family with all pupils taking part.

In the last week of term all the pupils and staff went to Scarborough Spa, for a panto treat, to see Cinderella. For many children this is their only experience of live theatre so its lovely to go to something so vibrant and interactive where they can shout at the baddie!

The Autumn term always ends with a joint Christingle Service, on the last day of term, with our partner school, St Hilda's Ampleforth. This year it was at St Hilda's Church and the service was led by Revd. Reid. The children all make their own Christingle and take part in the service supported by family and friends. It's a lovely way to end the term and get the Christmas holidays off to a flying start.

For more information about our school please contact us or see our website www.hovingham.n-yorks.sch.uk

THE PARK- hair, beauty and café

is family run with 30 years' experience



We provide excellent hair & beauty treatments using top of the range organic products.

And a selection of gifts too. Pop in to see what we have to offer.

Gillian, Becky & Gemma, The Park, Park Street,

Hovingham 01653 628969

info@theparkhovingham.co.uk

www.theparkhovingham.co.uk

<https://www.facebook.com/Theparkhovingham/>



Join us for our Club and other events

Valentine's Dinner

Friday 14th and Saturday 15th February
6^{pm} to 8.30^{pm} - Bookings recommended

Quiz Night

Friday 21st February - team bookings welcome

Film Club - Film to be confirmed
Tuesday 25th and Wednesday 26th Feb
Supper at 6.30^{pm} for 7.30^{pm} film

March Supper Club
Friday 13th March 6.30 to 8.30^{pm}

All Welcome!

Please visit www.worsleyarms.co.uk
or call (01653) 628234 for bookings and information

Website www.hovingham.org.uk/actiongroup Email action@hovingham.org.uk

Clock Winding – The team take care of winding the clock every week. Funds are being raised so that the clock can be wound automatically. Following the Christmas Market Café the fund now has raised £4,401.15.

Email Diary – This is published weekly to all those subscribed and is also available on the website. To add your event to the diary please contact the diary@hovingham.org.uk or if you would like to subscribe.

Market – The Market has had three Markets since the last Report; all have been very successful and shown that the Market attracts a resilient group of visitors, with over 10,000 visiting the Market in the last year. Swinton Silver Band attended both of the December Markets and we also had a donkey at the Market on 7th December, collecting valuable funds for Parkinson's. The market continues to provide a social and shopping hub for the village and our new volunteers give the market a bright future. The market has entered the Ryedale 'Green' Business Awards, the results to be announced on the 28th January.



Anyone who would like to run a stall at the Market, or help by volunteering, then please contact the Market Group at themarket@hovingham.org.uk.

Neighbourhood Watch – Enables you to help your neighbours and yourself and keep up to date about the latest scams etc. You can receive email alerts by registering on the website or by email at nhw@hovingham.org.uk.

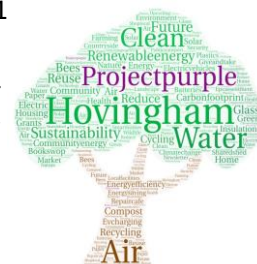
Newsletter – Anyone interested in writing articles and/or help editing etc contact us: newsletter@hovingham.org.uk We are delighted with our new sections of articles from Scackleton so thank you to Nicole and her team.

Playground – Thank you to our volunteers for all their hard work and support.

Project Purple – The Electric Vehicle Charger (EVC), for the Village Hall, will be installed on February 1st

Further projects are underway to support the reduction of our carbon footprint

- Wider Recycling (including working with RDC to upgrade the Recycling Centre) and other opportunities to reduce, reuse and repair. This includes the repeat of last winter's very successful **Christmas Tree Recycling** – another great success this year.
- Launch of the **Share Shed and Repair Café**
- Investigate community and individual renewable energy opportunities
- Investigate ways to improve home energy efficiency
- A website with more information will shortly be launched giving information and details of Purple events.



Snow Clearing – Preparations have been made to ensure we are ready for this winter

Speedwatch – Please contact the Speedwatch Team if you would like to help; the more volunteers we have means that we can have more sessions, slowing down traffic in Hovingham. The team now have a small wearable camera has been purchased so that incidents and abuse can be better reported to the Police for their action.

Village Survey – We are now receiving feedback and actions from many of those organisations contacted following the survey. Discussions are taking place on how others can be realistically achieved.

Websites – The revamped Village Hall website (www.hovingham-village-hall.org.uk) is now linked to the Village website (www.hovingham.org.uk). These, together with the Market website, continue to receive increasing number of visitors and interest. Contact the Action Group if you have anything you would like included.

Volunteering – There is something for everyone in volunteering

– something to suit your experience, age, interests and time available, with regular or ad hoc activities for everyone -

Get involved and benefit your Community - it's often surprisingly good fun.

Please contact action@hovingham.org.uk, or Ann or Phil Chapman on 627171 to get involved.

T h a n k Y o u

Warm fires and hot toddies

GENERAL

Grass Cutting Mr Shepherd-Cross has agreed to cut Hovingham village greens and Mr D. Skelton the Cemetery Grass. Clifford's are yet to reply.

Signs '20 is Plenty' Cllr Colenso will consult with Speedwatch team regarding "Check your speed" signs at entrances to village. It was agreed that '20 is Plenty' signs would be misleading. NYCC will be asked to "refresh" (30) roundels on road at village entrances and to supply new refuse bin stickers.

NALC Grievance Policy for Parish Council Employees was adopted.

SCACKLETON

- **Action Group** –no meeting has taken place since last Parish Council Meeting.
- **Mobile Home Update** – No update available.
- **Armistice Commemorative Tree Plaque** – former Councillor Wendy Swann put the plaque in place.

CORRESPONDENCE

- **Rodent Control**; the problem at the northern end of the village continues.
- **Building Work**; this is taking place throughout the village and has caused some short-term problems.
- **Scackleton Speeding**; volunteers should contact the Hovingham Speedwatch group

FINANCE

- **Report** copies are available on the website.
- **Interest** on the bank deposit account is currently ¼% pa. It was agreed to stay with Barclays bank accounts.
- **Mrs J Vowles** has kindly agreed to inspect the accounts.
- **It was agreed that:**
 - Spend £743.03 (excl VAT) on top green posts/railings
 - Pay £120 conference fee for Cllr Colenso
 - Spend up to £100 on new flower tub near Pilgrim Cottage
 - Final cost of Remembrance Tree for Hovingham & Scackleton was £360, (budget was £600). Thank you to those who donated the Scackleton Tree and plaques in both villages.

HOVINGHAM

Action Group Copy in Newsletter and on website.

Electric Vehicle Charger Will be installed on February 14th by BP Chargemaster.

Flood Report from WSP – Investigation into location and state of gullies around Hovingham urgently needed, together with plan for their update/maintenance. Hannah Cook is new contact at NYCC and she is being contacted by the Clerk.

Flower tub at Pilgrim Cottage – it was agreed to purchase a new tub.

Hovingham Quarry Update – complaints have been received regarding noise nuisance from several residents. The situation appears to be getting worse. Parish Council will contact Hovingham Estate as they are the owner of the land and also Environmental Health at RDC to investigate the problem. It was pointed out that the complaints regarding penetrating and loud vehicle reversing beepers also applies to agricultural vehicles.

Noticeboard – New door track has been obtained and will be fitted soon.

Playground Meeting with Playground Group and Parish Council to discuss unacceptable behaviour, parking and other issues to be arranged.

Recycling Area – RDC have investigated what residents dispose of in landfill bags which could be recycled. A plan is in place to update the recycling area by end of March.

Refurbishment of Hovingham White Railings this was agreed to take place in Spring.

Seat around tree on top green Enquiries are taking place for suitable supplier for this seat.

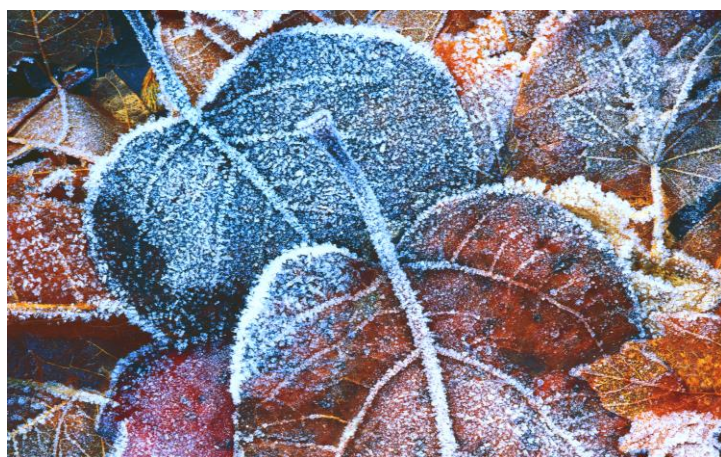
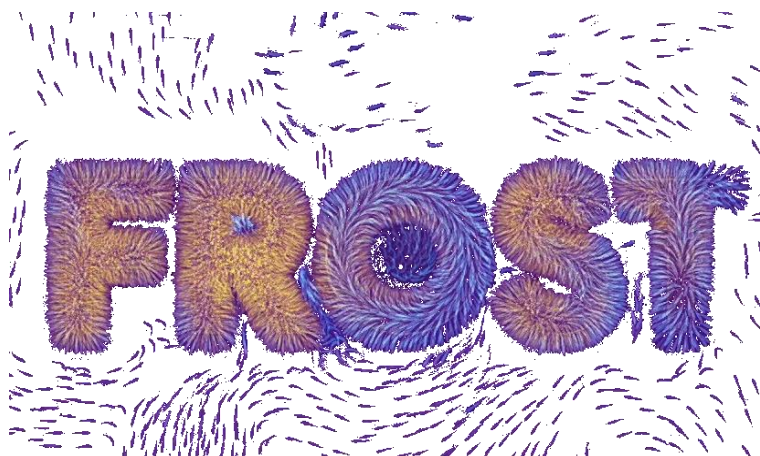
Telephone Kiosk calls can now be made and most of plastic panes have been replaced. Now needs painting by BT by October 2020. Well done to BT and Parish Clerk.

Tree in Village Hall Car Park a tree surgeon has inspected the tree and advised that the small copper beech should be removed. The larger tree needs to be tested to establish extent of the rot and a sound crown cleaning is required.

PARISH COUNCIL MEETINGS

Start at 7pm.
Next meetings on: 18th March, 13th May, 8th July, 9th Sept and 11th Nov 2020 will be in the Hovingham Community Room.

All residents are welcome to attend



February 2020

1 st Sat	Hovingham Village Market 10:30^{am} to 1:30^{pm} 60+ stalls, Café run by Village Hall Hovingham Village Hall		
2 nd Sun	Eucharist 10:30^{am} All Saints'	Methodist 10:30^{am} C.Gowland Chapel	Scackleton Evening Prayer 6:30^{pm}
3 rd Mon	Hovingham Landfill Waste Green Bin		Supermobile Library 5^{pm} to 7^{pm}
	Worsley Arms Film Club "Downton Abbey" – Additional Showing 6:30^{pm} Supper 7:30^{pm} Film		
4 th Tue	Scackleton Landfill Waste Green Bin		
	Hovingham Womens' Fellowship 2^{pm} Mrs Marion Moverley of Easingwold–All Welcome Hovingham Village Hall		
	Fish & Chip Van Returns to Hovingham Hall Green 5:25^{pm} to 5:55^{pm}		
9 th Sun	Eucharist Service 10:30^{am} All Saints'	Methodist 10:30^{am} N.Smith	Chapel
10 th Mon	Hovingham Recycling Recycling Bins		
11 th Tue	Scackleton Recycling Recycling Bins		
13 th Thu	Hovingham Tea Spot 10:30^{am} to 11:30^{am}		Hovingham Bakery
16 th Sun	Morning Praise 10:30^{am} All Saints'	Methodist 10:30^{am} K.Gowland	Chapel
17 th Mon	Hovingham Landfill Waste Green Bin		Supermobile Library 5^{pm} to 7^{pm}
18 th Tue	Scackleton Landfill Waste Green Bin		
23 rd Sun	Benefice Eucharist 10:30^{am} St. George's	Joint Methodist 10:30^{am} K.Gowland (H.C.)	Slingsby Chapel
24 th Mon	Hovingham Recycling Recycling Bins		
25 th Tue	Scackleton Recycling Recycling Bins		
26 th Wed	Worsley Arms Film Club (tbc) 6:30^{pm} Supper 7:30^{pm} Film Starts (£10 per person for supper & film)		
27 th Thu			

March 2020

1 st Sun	Morning Prayer 10:30 ^{am} All Saints'	Methodist 10:30 ^{am} Chapel	Scackleton Eucharist 6:30 ^{pm} St. George's
2 nd Mon	Hovingham Landfill Waste Green Bin	Supermobile Library 5 ^{pm} to 7 ^{pm}	
3 rd Tue	Scackleton Landfill Waste Green Bin		
	Hovingham Womens' Fellowship 2 ^{pm} a representative from the Barnabas Fund Home of Pat Hewitt		
7 th Sat	Hovingham Village Market 10:30 ^{am} to 1:30 ^{pm} 60+ stalls and Café run by Friends of Hovingham School Village Hall		
8 th Sun	Eucharist Service 10:30 ^{am} All Saints'		Methodist 10:30 ^{am} N.Smith Chapel
9 th Mon	Hovingham Recycling Recycling Bins		
10 th Tue	Scackleton Recycling Recycling Bins		
12 th Thu	Hovingham Tea Spot 10:30 ^{am} to 11:30 ^{am}		Hovingham Bakery
15 th Sun	Morning Praise 10:30 ^{am} All Saints'	Methodist 10:30 ^{am} Hovingham Chapel	
16 th Mon	Hovingham Landfill Waste Green Bin	Supermobile Library 5 ^{pm} to 7 ^{pm}	
17 th Tue	Scackleton Landfill Waste Green Bin		
22 nd Sun	Benefice Eucharist – Mothering Sunday 10:30 ^{am} Slingsby Church		Methodist 10:30 ^{am} Chapel
23 rd Mon	Hovingham Recycling Recycling Bins		
24 th Tue	Scackleton Recycling Recycling Bins		
25 th Wed	Worsley Arms Film Club (tbc) 6:30 ^{pm} Supper 7:30 ^{pm} Film Starts (£10 per person for supper & film)		
26 th Thu			
29 th Sun	Benefice Eucharist 10:30 ^{am} Amotherby Church		Methodist 10:30 ^{am} Chapel
30 th Mon	Hovingham Landfill Waste Green Bin	Supermobile Library 5 ^{pm} to 7 ^{pm}	
31 st Tue	Scackleton Landfill Waste Green Bin		

These Events normally take place weekly (except bank holidays)

Tue	Primary Tennis After School Club (except School Hols) 3:45 ^{pm} –4:45 ^{pm}				Scrumptious Fish & Chip Van - 5:25 ^{pm} Hall Green, opposite Village Hall					
	Hatha Yoga 6 ^{pm} –7 ^{pm} Village Hall–Booking essential Verity (07821)588117 www.anandiniyoga.co.uk 1 st £5, then £8 or £35 for 5 amandiniyoga@hotmail.com									
Wed	Barre Concept Class –11:15 ^{am} – Village Hall, run by Katie Mae Ellis (details above)									
Thur	Ryedale Family History Group - 10 ^{am} to 3 ^{pm} – Community Room Drop in any time; Further details available from www.ryedalefamilyhistory.org									
Fri	Pilates Class - 10:45 ^{am} for one hour–Village Hall run by Tracey Prest – All Welcome; Further details available at www.pilateswithtracey.co.uk or (07789)-99026									
182 BUS	(Thu & Sat) by leave Scackleton Phone Box 0919 Malton 0945 return Malton 1250 Scackleton 1316									
194 BUS	(Mon to Sat) Passes valid on all services except 0720 Mon-Fri Only–Please support this service									
Hovingham	0720	0810	1045	1310	1550	Malton	1025	1240	1512 or 1525	1735
Malton	0745	0840	1120	1335	1615	Hovingham	1050	1305	1540 or 1550	1800
Mobile Post Office Hovingham outside Village Shop Tue 2:30 ^{pm} –3:00 ^{pm} Thu 9:45 ^{am} –10:15 ^{am}										